



Oklahoma History Museum Exhibit Features Grinding Box On Loan from Talbot Library & Museum

3/23/2016

25 Comments

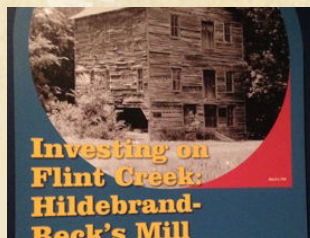
The [Oklahoma History Center](#), in Oklahoma City, is celebrating its 10th anniversary by inviting audiences to step back into time with its new exhibit "[Crossroads of Commerce: A History of Free Enterprise in Oklahoma](#)". This exhibit opened up on November 18, 2015 and includes an object on loan from the [Talbot Library and Museum](#)-- a Grinding Box that was rescued from the Hildebrand-Beck Mill before its eventual collapse.

A Bit of History Blog

Bits of History from

NE Oklahoma &

NW Arkansas



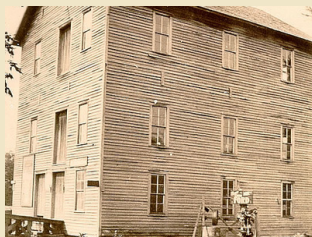
This wooden housing was salvaged from Hildebrand-Beck's Mill before it collapsed several years ago. Although the date of construction is unknown, it probably dates to the 1930s. You can see it in the photographic mural. The top part is the "hopper" that held the grain or corn to be ground. It was supported by the "horse" or "chair" that supported the hopper. The "shoe" controlled the flow of grain or corn. On bottom was the "tun" that channeled the grain or corn into a chute after grinding. Two gristmill stones sat inside the tun, one stationary on the bottom and one on top that turned by a belt attached to the water wheel. In this display, a set of grinding stones are laid outside the hopper as if they are about to be retooled.



Above Photos are from the exhibit at the Oklahoma History Center featuring the Grinding Box from the Hildebrand-Beck Mill.

(Photo Credit: Donna Clark)

The [Beck-Hildebrand Mill](#) was built in 1907 and is located near US 412 between Kansas, Oklahoma and Siloam Springs, Arkansas close to the town of Flint, OK. The first photo of the Beck-Hildebrand Mill, shows the actual operating features from 1924. The second photo shows the condition of the mill in the late 1970's.



Hildebrand-Beck Mill: 1907, late 1970s, and Grinding Box in mill

According to the [NewsOK.com website](#), this "exhibition tells the story of the state's pioneers of commerce and economic development through five time periods from 1716 to the present day....The exhibition chronicles commerce in Oklahoma all the way from early interactions and trade with the Native American tribes to recent economic drivers, such as the MAPS programs and the arrival of the Oklahoma City Thunder."

The [Oklahoma History Center](#) is open Monday - Saturday 10:00 am to 5:00 pm. The Center is located at 800 Nazih Zuhdi Drive, Oklahoma City, OK 73105.

Archives

[April 2024](#)
[January 2022](#)
[October 2020](#)
[September 2020](#)
[July 2020](#)
[May 2020](#)
[April 2020](#)
[January 2019](#)
[August 2016](#)
[June 2016](#)
[March 2016](#)
[January 2016](#)
[November 2015](#)
[February 2015](#)
[January 2015](#)
[October 2014](#)
[September 2014](#)
[August 2014](#)
[July 2014](#)
[June 2014](#)
[September 2013](#)

Categories

All

[RSS Feed](#)

Like 7

Post

25 Comments



Museum Hours:

Tuesday, Wednesday, Thursday

8:00AM - 4:00PM

Friday

8:00AM-2:00PM

(or other days by appointment for research)

Phone: 918-326-4532

Email: talbotlibrary@earthlink.net



Links:

[Goingsnake District Heritage Association](#)

[Cherokee Nation](#)

[Dawes Rolls](#)

[Oklahoma Historical Society](#)

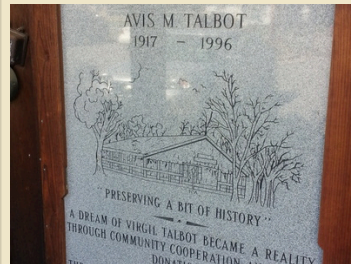
Talbot Library & Museum is listed at:

[TravelOK.com](#)

[AmericanTowns.com](#)

[Cyndi's list](#)

[AARP](#)



© 2014-2024 Talbot Library and Museum